

# Double Equipment Service Bulletin

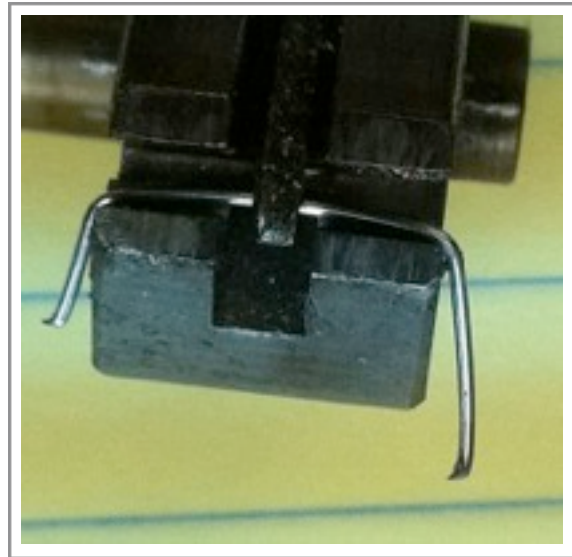
Tuesday, August 23, 2011

SUBJECT: Hohner Stitching Heads

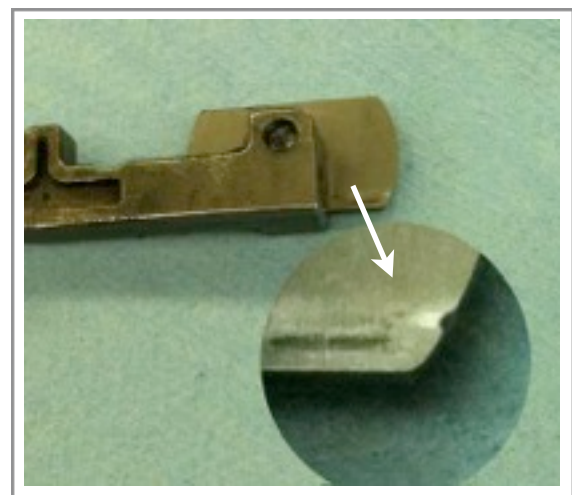
The most common problem is related to the worn-out wire cutters.

Here (Figure 1) we show a stitch with improperly adjusted leg lengths. Also, you can see how dull knives produce burrs on the ends of the wire.

Wire cutters will wear out (Figure 2 & 3) and need rotated or replaced. Both the flat blade and round die can be rotated and used again. The round die must be installed so it is just touching against the flat knife blade. Careful not to have too much pressure against the knives, they will bind-up.



**Figure 1**



**Figure 2 and 3**

[www.dblequip.com](http://www.dblequip.com)

330-416-5555

Copyright 2011